

THE CRANK & STOKE

T H E V O I C E O F T H E H I S T O R I C A L E N G I N E S O C I E T Y

Founded 1970

Officers:

President: Dean Kirby
 Vice President: Adam Lang
 Treasurer: RJ Frato
 Secretary: Sandra Paterek
 Membership: Penny Melkerson-Kirby

Directors:

David Anderson	2024/2024	Brian Baxter	2024/2025
Mark Menary	2023/2024	Jakob Baxter	2024/2025
Patrick Shelby	2023/2024	Adam Lang Jr.	2024/2025
Timothy Mansfield	2023/2024	Sam Paterek	2024/2025
Vincent Kibby	2023/2024		



INSIDE THIS ISSUE:	
2023—Another Great Show!	1
Election Results	2
HES 2024 Benefit Raffle	2
Lat's Get Ready to Raffle!	2
Engine Spotlight	3
Winter Projects	4
Christmas Party	4
Origins of HES	5
HES Information	6
HES Group Photo	6



2023 – ANOTHER GREAT SHOW!

We had yet another great show at our new home at Lake Metroparks Farm-park!

A big **Thank You** goes out to Lee, Steve, Andy, Nicole and all of the Farmpark staff for rolling out the red carpet for HES members and friends!

We had to change things up a bit as far as timing to accommodate Kenny Crumpton and the Fox 8 Cleveland television crew. Many of us were there with plenty of our equipment a day early so that we could be on the Thursday morning news. Any idea how hard it is to get that many people on the grounds at 6am on a Thursday? Somehow we managed to pull it off!

Some of the highlights of the show was the 1923 P&H clamshell, the Allis-Chalmers D21, the gas engine display at the front entrance and many car, truck, tractor, engine and other equipment displays.

Another big hit was having the 1933 American LaFrance fire engine on one side of the pond and Kirtland Fire Department's 2013 American LaFrance fire engine on the other side. Many, young and old, were able to try their hand at holding the fire hose spraying water.

We had one steam traction engine at the show this year with hopes of having more in the years to come.

One thing we take great pride in at our shows is the variety of equipment and the constant activity. Not only did we have operating construction equipment, the fire engines and the gas engines running, we also had daily equipment parades, starting demos, plowing, etc. There were also animal demonstrations such as the border collies sheep herding, milking demonstrations and horse demonstrations, just to name a few.

Mark your calendars now for next year's show which will be held on July 26th, 27th and 28th, 2024 where we will feature Cockshutt tractors and equipment.



ELECTION RESULTS

Elections were held on October 12th to select four officers and four directors for the 2024 show season.

Sandy Paterek as Secretary, Penny Melkerson-Kirby as Membership Secretary, Adam Lang as Vice President and Dean Kirby as President, remained for another year.

Larry DeMoss decided to retire from his position of Treasurer passing the torch to RJ Frato. RJ has been



spending the last year training with Larry and will continue to be mentored by him.

One new Director was elected: former President, Sam Paterek (2009).

Brian Baxter, Jakob Baxter and Adam Lang Jr. were elected for another term.

Mark Menary, Patrick Shelby, Vincent Kibby and Timothy Mansfield will serve their second year while Dave Anderson will serve Dominic Marino's second half of his term

Many thanks to our outgoing Treasurer: Larry DeMoss and to the Directors: Roger Rodhe and Dominic Marino.

2024 BENEFIT RAFFLE



So far the 2024 raffle is off to a really good start. We are finished selling tickets in 2023 as the season winds down and we are already in the black. With over 40% of the tickets sold, we will likely sell out so don't delay in getting yours!

The tractor is a 1958 Cockshutt 540 utility tractor that was purchased already restored, giving the restoration

crew a much needed break.

The tool kit is being donated once again by Bob Rankin and Peggy Harper and a 1/16 scale Cockshutt tractor has been purchased. We are actively searching for a suitable pedal tractor with hopes of finding a reasonably priced Cockshutt.

The next scheduled event will be the Piston Power Show on April 5th, 6th and 7th.

LET'S GET READY TO RAFFLE!

Contributed by Adam Lang

The 2025 raffle tractor has arrived! HES director Tim Mansfield located a very nice 1967 Massey Ferguson 135 tractor and was able to secure a good deal on it for the club.

As the tractor was originally equipped with a front end loader, the sheet metal has been well protected and is only in need of a new coat of paint. The hour meter is functional and shows just over 2,000 original hours.

The main issues needing addressed include: repairing the steering, replacing the clutch and fixing the rear rims as well as the normal paint job and detailing.

A big thanks to Tim for not only finding this tractor, but for getting the engine tuned up and running well! He also picked it up and hauled it to our shop where the rest of the repairs will take place before its first appearance at our July show.



Engine Spotlight

Contributed by Reid Wellman

The Miller Gas Engine Co.

Springfield, Ohio

The History:

Founded by Charles A. Miller in 1897, the Miller Gas Engine Company was located in Springfield, Ohio. Around 1901, the name was changed to the Miller Improved Gas Engine Company. Miller produced engines ranging from 35 hp to 400 hp in single, twin and four cylinder horizontal configurations. Miller's production ceased in 1939.

The Engines:

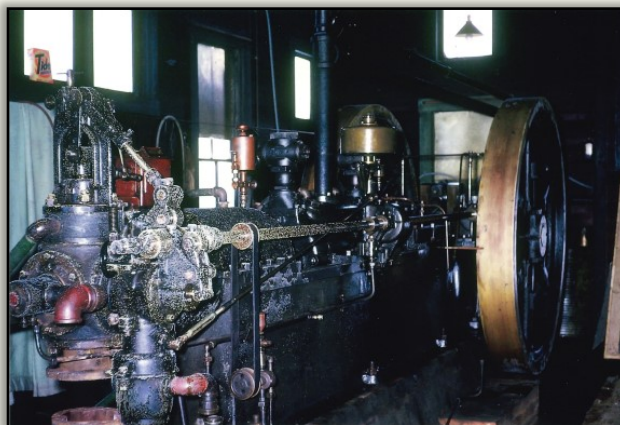
Introduced after 1910, the single cylinder Miller was offered in a 13" x 20" cylinder or 15" x 20" cylinder. This particular unit features a pressure balanced exhaust valve, a feature common to all sizes of Miller engines after 1903. The second major feature is the extended frame to allow the installation of the compressor cylinder. This design was introduced in 1915.

At a Glance:

This unit was purchased by the village of Scioto, Ohio. It was installed in the Village Waterworks in March of 1917. Compressed air was injected into a water well to raise water to the surface. Purchased to increase the capacity of the Waterworks during World War I and to provide water for the nearby railroad, the engine saw little use. Its last run was in the early 1950's. It was removed by John Wilcox in 1963. John began restoration in 2005 and continued until his death in 2010. The unit was then purchased in 2010 by Reid Wellman and its restoration was completed in 2012. This engine now resides as a permanent display in the Lillibridge Station building at the Coolspring Power Museum in Coolspring, Pennsylvania.

Engine Particulars:

- ◆ Company: Miller Improved Gas Engine Co.
- ◆ Year: 1917
- ◆ Engine Serial: #1706
- ◆ Compressor Serial: #1710
- ◆ 4 Cycle Combined Engine/Air Compressor
- ◆ Engine: 13" Bore & 20" Stroke
- ◆ Compressor Cylinder: 9" Bore & 20" Stroke
- ◆ Horsepower: 50 @ 235 RPM
- ◆ Compressor: 340 CFM @ 235 RPM
- ◆ Weight: 16,500 lbs.
- ◆ Ignition: Dual Spark Plug with Magneto, Battery and Coil
- ◆ Governing: Throttle
- ◆ Owned By: Reid Wellman



Above: The Miller as it was found in the Scioto Water Works
Below: Reid Wellman with his restored 1917 50 hp Miller





WINTER PROJECTS

Contributed by Adam Lang

Well, as the 2023 show season winds down, it's time to start putting equipment in the barn for the winter months. With the Holidays and cold weather ahead of us, it's also time to start thinking about what restoration projects we should tackle while we're stuck inside! While some might have picked out the next piece to go into the workshop months ago, many of us are still finishing up seasonal work and

haven't yet started to think about what's next on the list.

Farm tractors and gas engines seem to be the most common machines in our club, but a new item or demonstration can really complement the equipment we have exhibited for years! One of the most common asked questions that I receive when running our hit and miss engines at a show is "what was it used for?" We would love to an-

swer that by adding more working implements and attachments to the show next year. Since education is part of HES and Farmpark's purpose, it only makes sense that we demonstrate what our machinery was actually used for. Feed grinders, electrical generators, washing machines and water pumps make great displays for small engines. Plows, disc harrows, and cultivators are now able to be used on site

thanks to our Farmpark location!

As we all settle in for the winter, keep a few of these ideas in mind as you may just run across the perfect addition to your collection at an auction or on Marketplace. Who knows, maybe you already own something that just needs finished up, like an ice cream maker for your gas engine, or a belt driven oat crusher that's been in storage for years!



CHRISTMAS PARTY

Lake Metroparks Farmpark will once again provide HES with a room to have our annual Christmas Party. We will be in the same room as the past two years, but due to scheduling conflicts, we will have our party on **Saturday, January 6th**. We will have our usual raffle table and 50/50. Please feel free to bring items for the raffle table. Invitations will be mailed soon.



ORIGINS OF THE HISTORICAL ENGINE SOCIETY

Contributed by Ellis and Reid Wellman

The Seed:

Four men in the Kirtland area had regular gatherings in which they worked on gasoline engines and other old mechanical items. Some had attended the National Threshers Association in Montpelier, Ohio.

They thought that there would be enough people of related interest in the northeast Ohio area to form a club or show. These four men were: Bill Thorne, Ed Deis, Victor Nesnadny and Bill Hachtel.

The Sapling:

In the late summer of 1969 Deis, Nesnadny and Hachtel visited Ellis and Marcia Wellman in Chesterland. Their mission was to discuss the potential for such a show with the Wellman's who had a founding role in creating the Pioneer Steam and Gas Engine Society in northwest Pennsylvania.

There was a lively discussion about the extent of agricultural interest in this rather urban area. The Kirtland group thought there was local interest in history to merit a try. Experience in this endeavor, they thought, was needed to get started.

Reluctantly, Ellis decided to continue to meet with them to see how much interest could be developed.

On December 10, 1969, a meeting at Kirtland's Ranger Station at Chapin Forest was called and hosted by Ed Deis. Some 11 people attended.

Organization of a club was discussed as was the idea for some sort of a show. Temporary officers were agreed upon, tasks were assigned to seek other interested people, consider possible show locations and seek sponsors.

Starting in February 1970, monthly meetings were set in motion. Someone had obtained an invitation to display at the 1970 Kirtland Strawberry Festival – the first showing for what became the Historical Engine Society.

In due course, club officers were elected with Wellman acting as chairman. Selection of a name for the new organization with many suggestions and lively discussion, Historical Engine Society was compromised upon. The tasks of getting a proper charter and other business details were begun. Preston Foster of Warren began attending and offered insurance and tax information from his experiences.

A venue for a show was a big topic. There was hope that the steam engine gathering which had been held at the Geauga County Historical Society's Century Village Museum in Burton, Ohio could be wed with the Historical Engine Society quest. No agreement was reached. Following the encouragement of the Kirtland Strawberry Festival, Harlow Whiting proposed his Sunrise Farm in Burton as a site. The financial needs for a new show led to working with Sunrise as the 1971 show site.

The show mentioned at Century Village Museum was a true "Steam Show". It started in the early 1960's and it is believed 1970 was the last year. Chester Scheffel, Henry Newton, Luman Krantz, Bill Hachtel and the Gotthardt brothers displayed their traction engines and they all came to the early HES shows. Bill's Port Huron was at the first HES show at the Kirtland Strawberry Festival. Ed Deis deserves a lot of credit as it was his vision to bring collectors together. As it is recalled, he put together the first Crank & Stoke hand-written newsletters. With the Strawberry Festival show, this brought people in such as Don Green, Oscar Kirby, Al & Ken Brichford, Bob Leonard & many others. Bill & Mike Liddy and Ted Straka also came into the group. Bob Carlton also learned of the group and joined along with many others. In 1974, an agreement was made and the show moved to Century Village Museum.

The Tree:

The Historical Engine Society has operated as a not-for-profit 501(c)3 organization for 50 plus years. In 2021 the HES Board of Directors decided it was time to move the annual event typically held the last full weekend in July to Lake Metroparks Farmpark, thus returning to its Kirtland roots. The 2022 show was the first year at the new venue.



THE VOICE OF
THE HISTORICAL
ENGINE SOCIETY

PO Box 892
Chardon, OH 44024
Phone: (440) 669-2578
Email: info@historicalengine.org

**Meetings are held the 2nd Thursday of
the month (except December, January
and February) at 7:30pm in the Theater
at Lake Metroparks Farmpark
8800 Euclid Chardon Rd. (Route 6)
Kirtland, OH 44094**

The Historical Engine Society is a non-profit organization whose purpose is to provide a focal point for people interested in the machinery of a bygone era. We encourage the collection, preservation, restoration, and exhibition of power producing devices and the machinery driven by these units.

Society fellowship consists in the sharing of knowledge, ideas and educational programs. Work parties, picnics and field trips make this a truly family oriented organization. The annual show is a year-round effort, culminating in a gathering of people and their machines. Visitors are treated to the sights, sounds and demonstrations of the power of the past.

Group Photo—Possibly 1985

